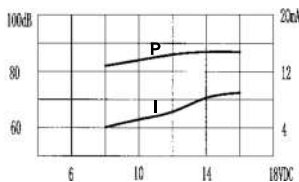
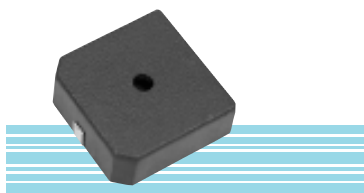


SMT Buzzer

SPA-1712 series SMT Buzzer

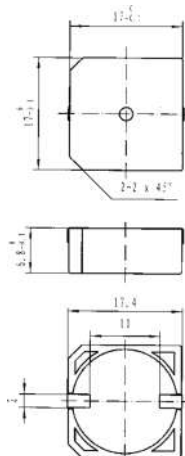


<b>Model No</b>	<b>SPA-1712</b>
Rated Voltage	12VDC
Operating Voltage	1.5~16 VDC
Max. Rated Current	10mA at 12VDC
Min. Sound Pressure Level	85dB / 12VDC / 10cm
Resonant Frequency	4.0±0.5KHz
Operating Temperature	-20~+80jæ
Tone Nature	Continuous
Weight	2 g



color Black  
PPS Housing Material  
SMT Terminal

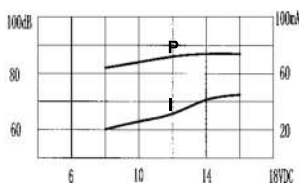
DIMENSIONS



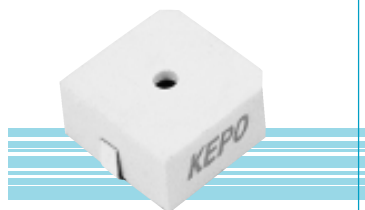
all dimensions are in mm

\* Value applying at rated voltage

SMA-1200B series SMT Buzzer

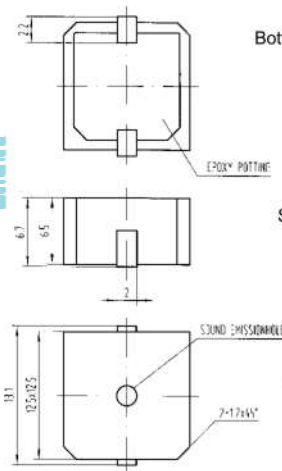


Model No	SMA-1201B	SMA-1205B	SMA-1212B
Rated Voltage	1.5V	5V	12V
Operating Voltage	1.4~3V	4~7V	8~15V
Max. Rated Current	20mA	40mA	40mA
Min. Sound Pressure Level	80dB/10cm	87dB/10cm	90dB/10cm
Resonant Frequency	2300Hz±300Hz	2300Hz±300Hz	2300Hz±300Hz
Operating Temperature	-20~+70jæ	-20~+70jæ	-20~+70jæ
Tone Nature	Continuous	Continuous	Continuous
Weight	2 g	2 g	2 g



color black  
PPS Housing Material  
SMT Terminal

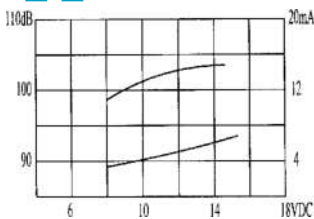
DIMENSIONS



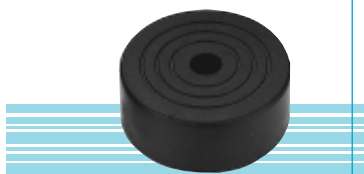
all dimensions are in mm

\* Value applying at rated voltage

KPI-4000P series Piezo buzzer

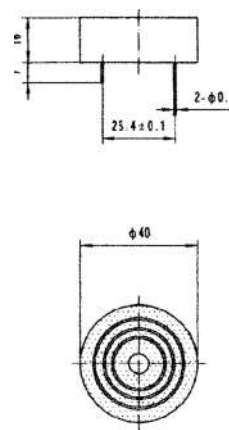


<b>Model No</b>	<b>KPI-4000P</b>
Rated Voltage	12VDC
Operating Voltage	3-20VDC
Max. Rated Current	12mA at 12VDC
Min. Sound Pressure Level	98dB at 12VDC/30cm
Tone Nature	Continuous
Resonant Frequency	2.8±0.5KHz
Housing Material/Color	ABS/Black
Operating Temperature	-20jæ~+60jæ
Store Temperature	-30jæ~+70jæ
Weight	10g



color Black  
ABS Housing Material  
Lead Terminal

DIMENSIONS



all dimensions are in mm

\* Value applying at rated voltage

The information contained herein is believed to be correct, but no guarantee for accuracy, completeness KPEO Electronics Ltd. reserves the right to make changes without notification.